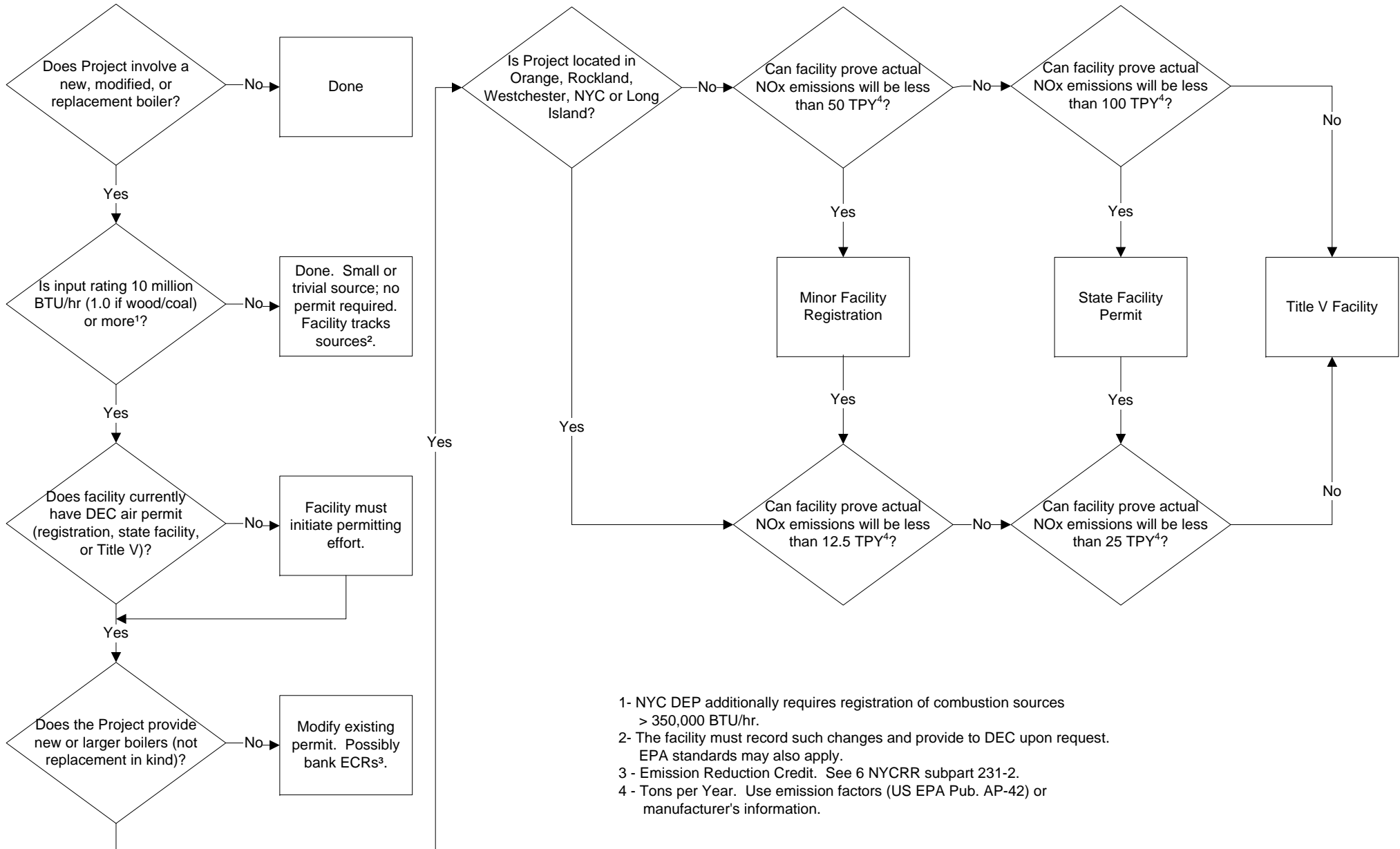


Dormitory Authority State of New York  
Code Compliance Department

Air Permitting Flow Chart  
Projects Involving Boilers  
Internal Screening Use Only



- 1- NYC DEP additionally requires registration of combustion sources > 350,000 BTU/hr.
- 2- The facility must record such changes and provide to DEC upon request. EPA standards may also apply.
- 3 - Emission Reduction Credit. See 6 NYCRR subpart 231-2.
- 4 - Tons per Year. Use emission factors (US EPA Pub. AP-42) or manufacturer's information.