

NO.	DATE	DESCRIPTION
	07/06/15	100% CD COMPLIANCE
REVISIONS		
100% CD DOCUMENTS		
24 OCTOBER 2014		

Louis Armstrong House Museum Education Center

34-49 107th Street
 Corona, New York 11368
 Block 1749, Lot 66

Architects:
Caples Jefferson Architects PC
 37-18 Northern Boulevard, Suite 319
 Long Island City, New York 11101
 p: 212.779.9772 f: 212.202.6045

Structural Engineers:
Severud Associates
 469 Seventh Avenue, Suite 900
 New York, New York 10018
 p: 212.986.3700 f: 212.687.6467

MEP and Security Engineers:
WSP FlackKurtz
 512 Seventh Avenue
 New York, New York 10018
 p: 212.532.9600 f: 212.689.7489

Lighting Consultant:
Arup
 77 Water Street
 New York, New York 10005
 p: 212.896.3000

Theatrical Lighting Consultant:
Fisher Decker Associates
 22 West 19th Street
 New York, NY 10011
 p: 212.691.3020 f: 212.633.1644

Acoustical Consultant:
Creative Acoustics
 5 Inwood Lane
 Westport, CT 06880
 p: 203.226.8949 f: 203.246.2440

Sustainable Design Consultant:
Steven Winter Associates
 59 Washington Street, 6th Floor
 Norwalk, Connecticut 06854
 p: 203.857.0200 f: 203.852.0741

Sitework Consultant:
Craig Richmond Landscape Architecture
 2 Green Street, Suite 2W
 Huntington, NY 11743
 p: 516.232.3568

Code Consultant:
Berzak/Schoen Consultants
 295 Broadway, Suite 1102
 New York, New York 10007
 p: 212.243.2434 f: 212.691.2409

Code Consultant:
Berzak/Schoen Consultants
 295 Broadway, Suite 1102
 New York, New York 10007
 p: 212.243.2434 f: 212.691.2409

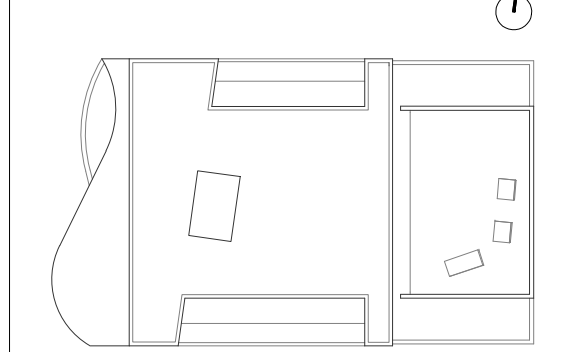
STAMP:

Bitmap3542355446.jpg

DOB STAMP:

DOB BSCAN:

KEY



Drawing Title:
SECOND FLOOR PLAN

Scale:
 AS NOTED

Date:
 24 OCTOBER 2014

Drawing Number:
A-122.00

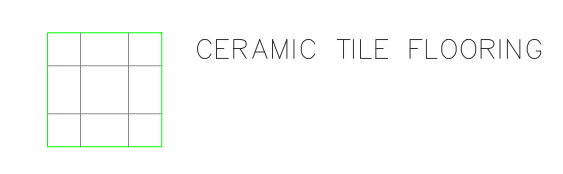


2ND FLOOR ROOM KEY

RM. #	ROOM NAME
200	OFFICE SUPPORT
200-1	WORK AREA LOBBY 1
201	WORK AREA
201-1	ELECTRICAL CLOSET
202	WORK AREA LOBBY 2
202-1	SPRINKLER CLOSET
203	OFFICE 1
204	OFFICE 2
205	ARCHIVES
206	READING ROOM
207	WORKROOM
209	PANTRY
211	STAFF TOILET
WP-200	WEST PORCH
LRF-200	LOW FLAT ROOF 1
LRF-200	LOW SLOPING ROOF
LRF-200	LOW FLAT ROOF 2
ST1-200	STAIR 1
ST2-200	STAIR 2
EL1-200	ELEVATOR

- NOTES**
- FOR SYMBOLS & ABBREVIATIONS, SEE G-001
 - FOR PARTITION TYPES, SEE A-501 & A-502
 - FOR FINISH SCHEDULE & FIREPROOFING SCHEDULE, SEE A-503
 - FOR DOORS & HARDWARE, SEE A-504
 - FOR REFLECTED CEILING PLAN, SEE A-133
 - FOR EDGE OF SLAB PLAN, SEE A-112
 - FOR STRUCTURAL FRAMING PLAN, SEE S-102
 - FOR PLUMBING PLAN, SEE P-302
 - FOR FLOOR DRAIN LOCATIONS, SEE P-302
 - FOR SPRINKLER PLAN, SEE FP-302
 - FOR MECHANICAL PLAN, SEE M-302
 - FOR ELECTRICAL POWER PLAN, SEE E-102
 - FOR FIRE ALARM WORK, SEE E-302
 - FOR ELECTRICAL LIGHTING PLAN, SEE E-202
 - FOR SECURITY PLAN, SEE SEC-102
 - FOR AUDIOVISUAL WORK, SEE EAV-122 & AV-122
 - FOR FIREPROOFING SCHEDULE, SEE A-503
 - FOR GLASS & CURTAINWALL SCHEDULE, SEE A-505
 - FOR ARCHITECTURAL WOODWORK SCHEDULE, SEE A-506
 - FOR DECORATIVE METAL SCHEDULE, SEE A-506
 - FOR LIBRARY MOBILE SHELVING, SEE A-507

- GENERAL NOTES**
- UNLESS OTHERWISE NOTED, FURNITURE AND EQUIPMENT IS NOT IN CONTRACT AND IS TO BE PROVIDED BY OWNER. FURNITURE IS INDICATED FOR REFERENCE ONLY.



1 SECOND FLOOR PLAN
 A122 Scale: 1/4" = 1'-0"

