

NO.	DATE	DESCRIPTION
07/06/15		100% CD COMPLIANCE

REVISIONS
 100% CD DOCUMENTS
 24 OCTOBER 2014

Louis Armstrong House Museum Education Center
 34-49 107th Street
 Corona, New York 11368
 Block 1749, Lot 66

Architects:
Caples Jefferson Architects PC
 37-18 Northern Boulevard, Suite 319
 Long Island City, New York 11101
 p: 212.779.9772 f: 212.202.6045

Structural Engineers:
Sevurat Associates
 465 Seventh Avenue, Suite 900
 New York, New York 10018
 p: 212.686.3700 f: 212.687.6467

MEP and Security Engineers:
WSP Flack+Kurtz
 512 Seventh Avenue
 New York, New York 10018
 p: 212.532.9600 f: 212.689.7489

Lighting Consultant:
Arup
 77 Water Street
 New York, New York 10005
 p: 212.896.3000

Theatrical Lighting Consultant:
Fisher Design Associates
 22 West 19th Street
 New York, NY 10011
 p: 212.691.3020 f: 212.633.1644

Acoustical Consultant:
Boyce Nemec Designs
 3 Sisson Place
 P.O. Box 566
 Norfolk, CT 06059
 p: 860.542.9377 f: 860.542.9614

Acoustical Consultant:
Creative Acoustics
 5 Inwood Lane
 Westport, CT 06880
 p: 203.226.8949 f: 203.246.2440

Sustainable Design Consultant:
Steven Winter Associates
 50 Washington Street, 6th Floor
 Norwalk, Connecticut 06854
 p: 203.857.0000 f: 203.852.0741

Sitework Consultant:
Craig Richmond Landscape Architecture
 2 Green Street, Suite 217
 Huntington, NY 11743
 p: 516.232.3568

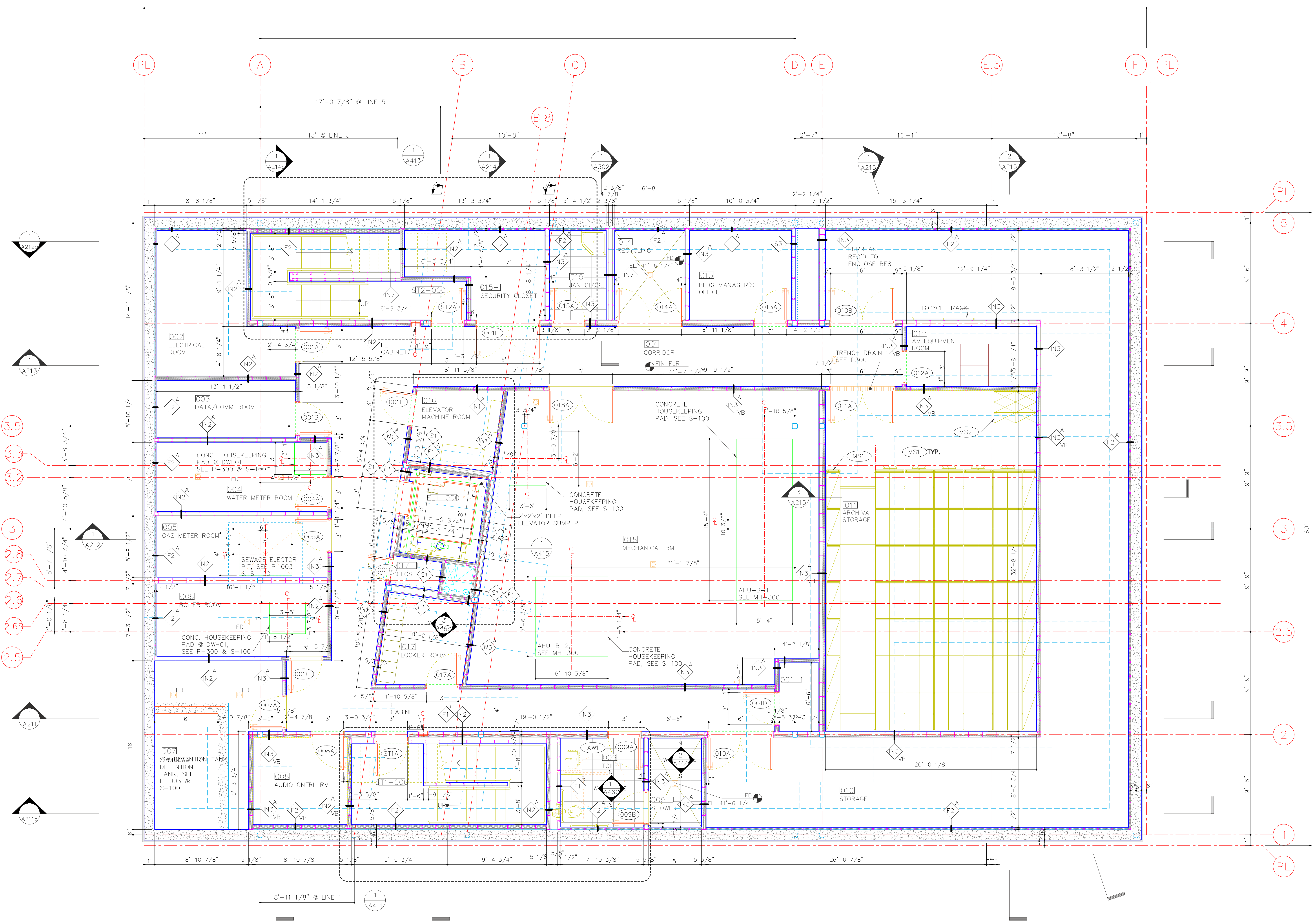
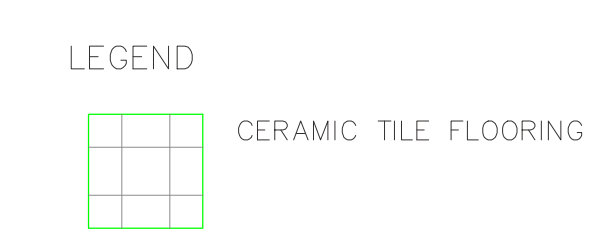
Cost Consultant:
Barak/Schoen Consultants
 289 Broadway, Suite 1102
 New York, New York 10007
 p: 212.243.2434 f: 212.691.2409

CELLAR ROOM KEY

RM. #	ROOM NAME
001	CORRIDOR
001-1	DIMMER CLOSET
002	ELECTRICAL ROOM
003	DATA/COMM ROOM
004	WATER METER ROOM
005	GAS METER ROOM
006	BOILER ROOM
007	SW DETENTION TANK
008	AUDIO CONTROL ROOM
009	TOILET
009-1	SHOWER
010	STORAGE
011	ARCHIVAL STORAGE
012	AV EQUIPMENT ROOM
013	BLDG MANAGERS OFFICE
014	RECYCLING
015	JANITORS CLOSET
015-1	SECURITY CLOSET
016	ELEV. MACH. ROOM
017	LOCKERS
017-1	CLOSET
018	MECHANICAL ROOM
ST1-00	STAIR 1
ST2-00	STAIR 2
EL-1-00	ELEVATOR

- NOTES**
- FOR SYMBOLS & ABBREVIATIONS, SEE G-001
 - FOR PARTITION TYPES, SEE A-501 & A-502
 - FOR FINISH SCHEDULE & FIREPROOFING SCHEDULE, SEE A-130
 - FOR DOORS & HARDWARE, SEE A-504
 - FOR REFLECTED CEILING PLAN, SEE A-130
 - FOR EDGE OF SLAB PLAN, SEE A-110
 - FOR FOUNDATION PLAN, SEE S-100
 - FOR PLUMBING PLAN, SEE P-004 & P-300
 - FOR FLOOR DRAIN LOCATIONS, SEE P-300
 - FOR SPRINKLER PLAN, SEE FP-300
 - FOR MECHANICAL PLAN, SEE M-300 & M-300P
 - FOR ELECTRICAL POWER PLAN, SEE E-100
 - FOR FIRE ALARM WORK, SEE E-300
 - FOR ELECTRICAL LIGHTING PLAN, SEE E-200
 - FOR SECURITY PLAN, SEE SEC-100
 - FOR AUDIOVISUAL WORK, SEE EAV-120 & AV-120
 - FOR SITE WORK, SEE C- and BPP- SERIES DRAWINGS
 - FOR FIREPROOFING SCHEDULE, SEE A-503
 - FOR GLASS & CURTAINWALL SCHEDULE, SEE A-505
 - FOR ARCHITECTURAL WOODWORK SCHEDULE, SEE A-506
 - FOR LIBRARY MOBILE SHELVING, SEE A-507

GENERAL NOTES
 1 UNLESS OTHERWISE NOTED, FURNITURE AND EQUIPMENT IS NOT IN CONTRACT AND IS TO BE PROVIDED BY OWNER. FURNITURE IS INDICATED FOR REFERENCE ONLY.

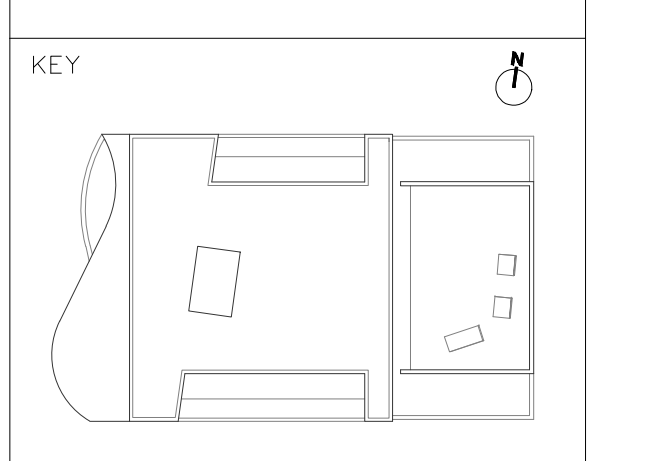


1 CELLAR PLAN
 A120 Scale: 1/4" = 1'-0"



DOB STAMP:

DOB BSCAN:



Drawing Title:
 CELLAR PLAN

Scale:
 AS NOTED
 Date:
 24 OCTOBER 2014
 Drawing Number:
 A-120.00